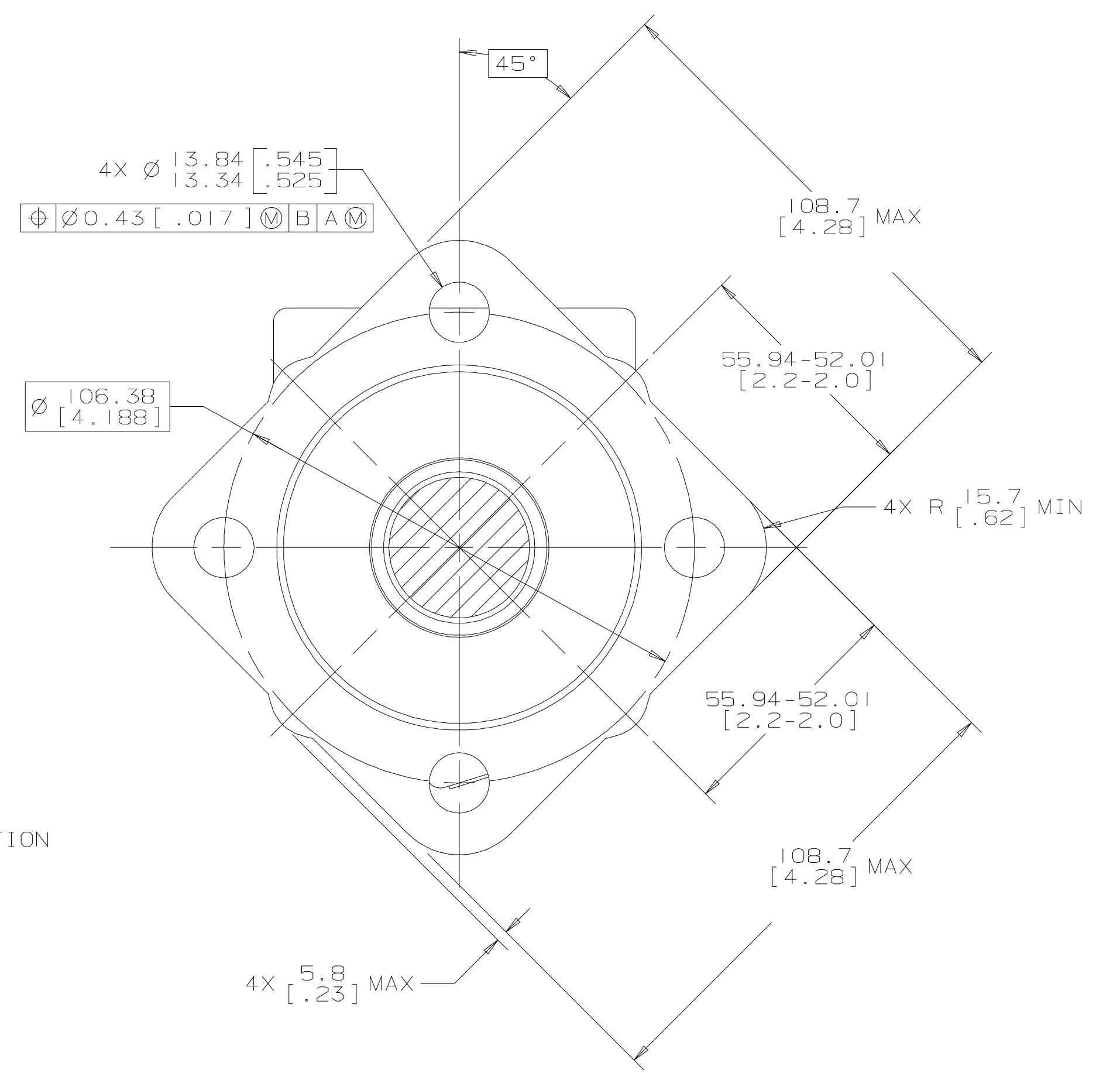
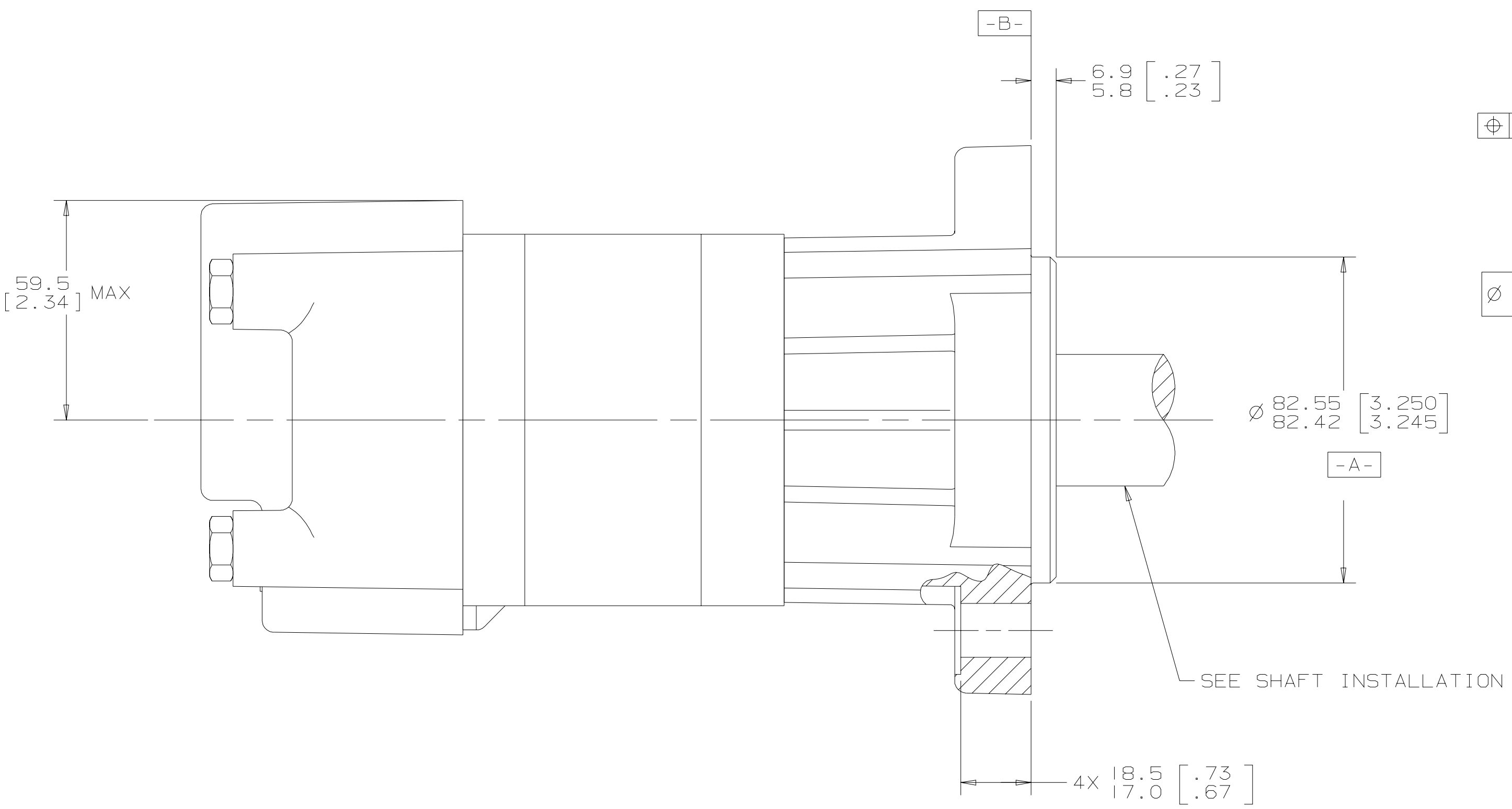
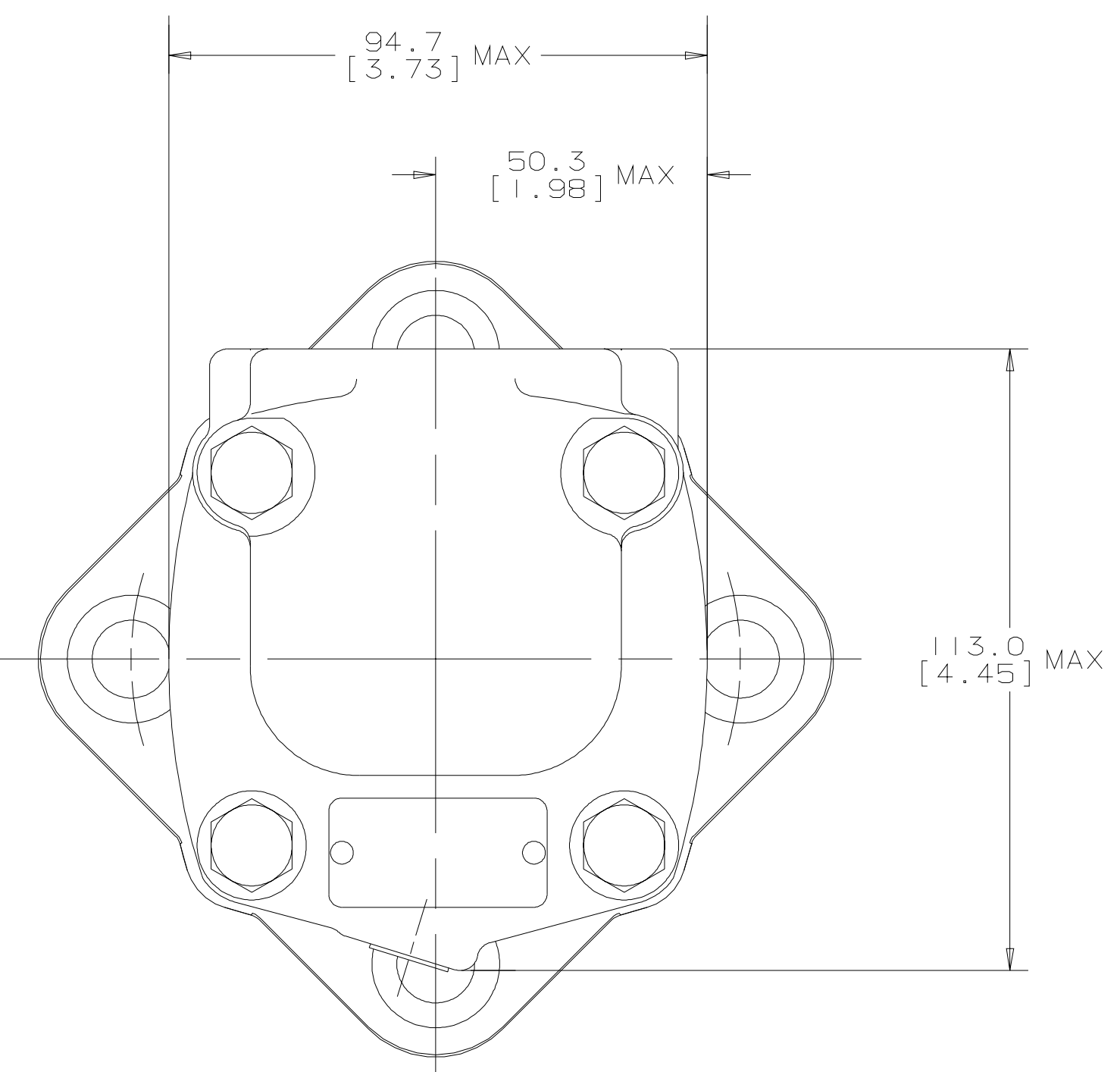
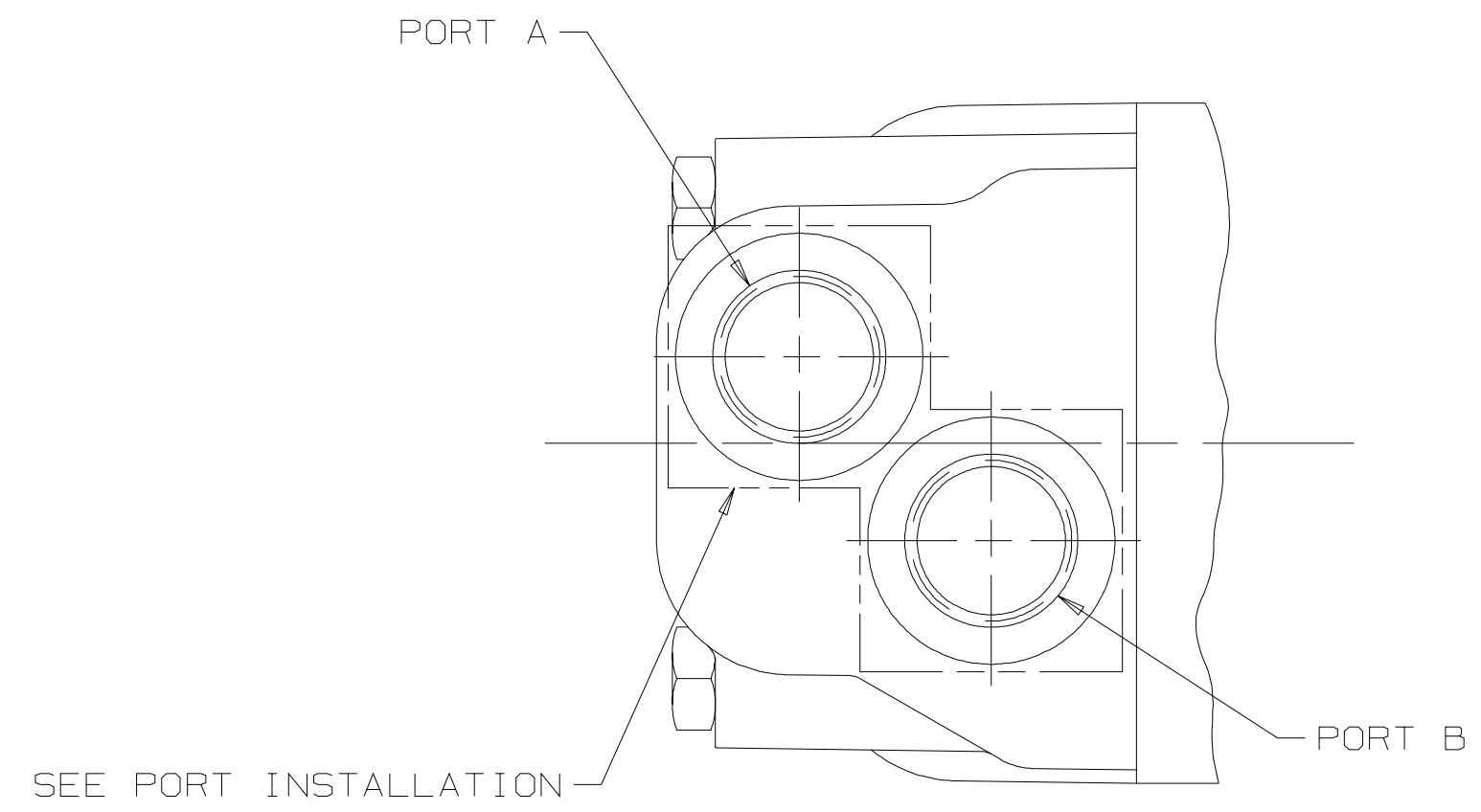


SYM	REVISION	BY	DATE	ECN
A	ENGINEERING RELEASE	RAF	4/14/93	23947
C	REVISED	MJZ	6-12-96	27921
D	(4A)NOTE 2 WAS MOUNTING TYPE: H	AGJ	5/13/02	41044
E	(3C)4X Ø 13.84/13.34 [.545/.525] WAS 4X Ø 13.72/13.46 [.540/.530]	AGJ	9-30-03	45504
F	REVISED	PRK	8/5/09	18334



NOTE

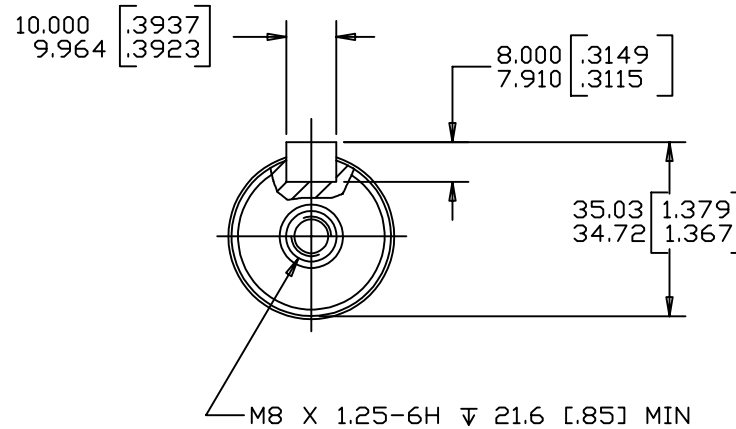
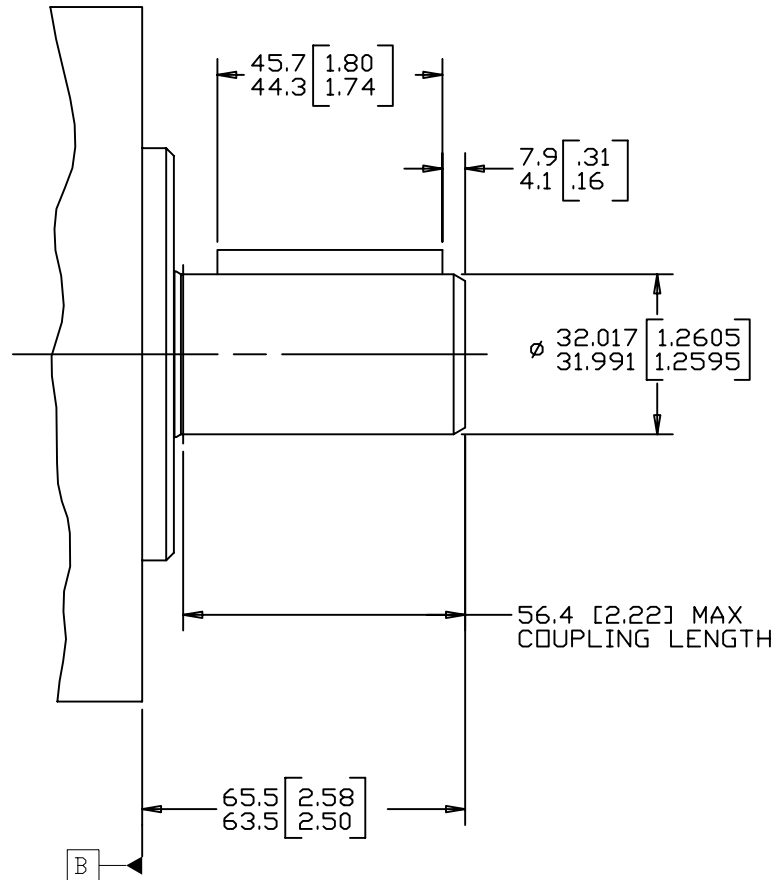
1 ROTATION:
STANDARD: WHEN FACING SHAFT END OF MOTOR, SHAFT TO ROTATE;
CLOCKWISE WHEN PORT "A" IS PRESSURIZED
COUNTERCLOCKWISE WHEN PORT "B" IS PRESSURIZED
REVERSE: WHEN FACING SHAFT END OF MOTOR, SHAFT TO ROTATE;
CLOCKWISE WHEN PORT "B" IS PRESSURIZED
COUNTERCLOCKWISE WHEN PORT "A" IS PRESSURIZED

2 MOUNTING TYPE: AH
STANDARD: 4 BOLT: Ø 82.6 [3.25] PILOT
Ø 13.59 [.535] HOLES ON Ø 106.4 [4.19] BOLT CIRCLE

UNLESS OTHERWISE SPECIFIED ALL DIMENSIONS ARE IN		DRAWING BASED ON ANSI Y14.5M-1982	
INCHES <input type="checkbox"/>	MILLIMETERS <input checked="" type="checkbox"/>	EATON CORPORATION - CONFIDENTIAL AND PROPRIETARY NOTICE TO PERSONS RECEIVING THIS DRAWING AND / OR TECHNICAL INFORMATION	
TOLERANCES		THIS DOCUMENT, INCLUDING THE DRAWING AND INFORMATION CONTAINED THEREON, IS CONFIDENTIAL AND IS THE EXCLUSIVE PROPERTY OF EATON CORPORATION AND IS HEREBY SO Labeled AND SUBJECT TO SOCIAL BY EATON AT ANY TIME. BY TAKING POSSESSION OF THIS DOCUMENT, THE RECIPIENT ACKNOWLEDGES AND AGREES THAT THIS DOCUMENT IS TO BE KEPT IN CONFIDENTIALITY AND IS NOT TO BE REPRODUCED, COPIED, OR TRANSMITTED IN ANY MANNER WITHOUT THE WRITTEN CONSENT OF EATON. IN THE CASE OF CONFLICTING CONSTRUCTION PROVISIONS, THIS NOTICE SHALL GOVERN THE TERMS OF THIS DOCUMENT. COPYRIGHT 2004 EATON CORPORATION - ALL RIGHTS RESERVED.	
.xx +REF	DRAIN RAF	MATERIAL/HEAT TREAT	
.xxx +ONLY	CHECKED K. RANDOLPH	BY/DATE 4-22-93	
UNSPECIFIED RADI ARE	ENGRG M. BERNSTROM	TITLE	
UNSPECIFIED DRAFT ANGLES ARE	BY/DATE 4-22-93	2000 SERIES MOTOR INSTALL	
DRAWING FORMAT CAD <input checked="" type="checkbox"/> MANUAL <input type="checkbox"/>	THIRD ANGLE PROJECTION	MICROINCHES (MICROINCHES)	NUMBER
DO NOT SCALE	ARITHMETICAL AVERAGE	SCALE 1/1	A-669-001
		SHEET 1 OF 1	

G S K

REV	DESCRIPTION	BY	DATE	ECN
A	ENGINEERING RELEASE	AGJ	5-26-93	22833
B	7.9/4.1[.31/.16] WAS 9.2/4.5[.36/.18]	RAF	2-8-96	M14882
C	ADDED MOUNTING TYPE OPTION W TO NOTE 1	AGJ	6-1-99	M21685
D	NOTE 1 WAS MOUNTING TYPE: OPTION H OR W	AGJ	5-13-02	41044
E	65.5/63.5 [2.58/2.50] WAS 65.8/63.5 [2.59/2.50]	AGJ	5-17-04	47918
F	NOTE 2 WAS OUTPUT SHAFT: OPTION 23 & 30	PM	4-4-06	54522
G	NOTE 1 WAS MOUNTING TYPE: OPTION AH, AW & AY	YUP	1-05-17	M103022



REVIEWED FOR CLASSIFICATION PER ESP-042

NOTE
 1 MOUNTING TYPE: OPTION AH, AS, AW & AY
 2 OUTPUT SHAFT: OPTION 16 & 22

UNLESS OTHERWISE SPECIFIED ALL DIMENSIONS ARE IN INCHES <input type="checkbox"/> MILLIMETERS <input checked="" type="checkbox"/>		DRAWING BASED ON ASME Y14.5-2009	
TOLERANCES .X ± ---- .XX ± REF .XXX ± ONLY \leq ± ----		EATON CORPORATION - CONFIDENTIAL AND PROPRIETARY NOTICE TO PERSONS RECEIVING THIS DRAWING AND / OR TECHNICAL INFORMATION THIS DOCUMENT, INCLUDING THE DRAWING AND INFORMATION CONTAINED THEREIN, IS THE EXCLUSIVE PROPERTY OF EATON CORPORATION, AND IS MERELY ON LOAN AND SUBJECT TO RECALL BY EATON AT ANY TIME. BY TAKING POSSESSION OF THIS DOCUMENT, THE RECIPIENT ACKNOWLEDGES AND AGREES THAT THIS DOCUMENT CANNOT BE USED IN ANY MANNER ADVERSE TO THE INTERESTS OF EATON, AND THAT NO PORTION OF THIS DOCUMENT MAY BE COPIED OR OTHERWISE REPRODUCED WITHOUT THE PRIOR WRITTEN CONSENT OF EATON. IN THE CASE OF CONFLICTING CONTRACTUAL PROVISIONS, THIS NOTICE SHALL GOVERN THE STATUS OF THIS DOCUMENT. COPYRIGHT 2008 EATON CORPORATION - ALL RIGHTS RESERVED.	
UNSPECIFIED RADII ARE ----		DRAWN BY/DATE: A. JOHNSON 3-19-93 CHECKED BY/DATE: SDR 6-24-93 ENGRG BY/DATE: S.JZ 6-28-93 METALLURGY BY/DATE: ----	MATERIAL/HEAT TREAT TITLE: 2000 SERIES MOTOR SHAFT INSTALLATION
UNSPECIFIED DRAFT ANGLES ARE ----		THIRD ANGLE PROJECTION 	MICROINCHES <input type="checkbox"/> MICROMETERS <input type="checkbox"/> MICROINCHES) <input type="checkbox"/> NUMBER: A-687-023
DRAWING FORMAT CADD <input checked="" type="checkbox"/> MANUAL <input type="checkbox"/>		DO NOT SCALE	ARITHMETICAL AVERAGE <input checked="" type="checkbox"/> SCALE 1/1 SHEET 1 OF 1