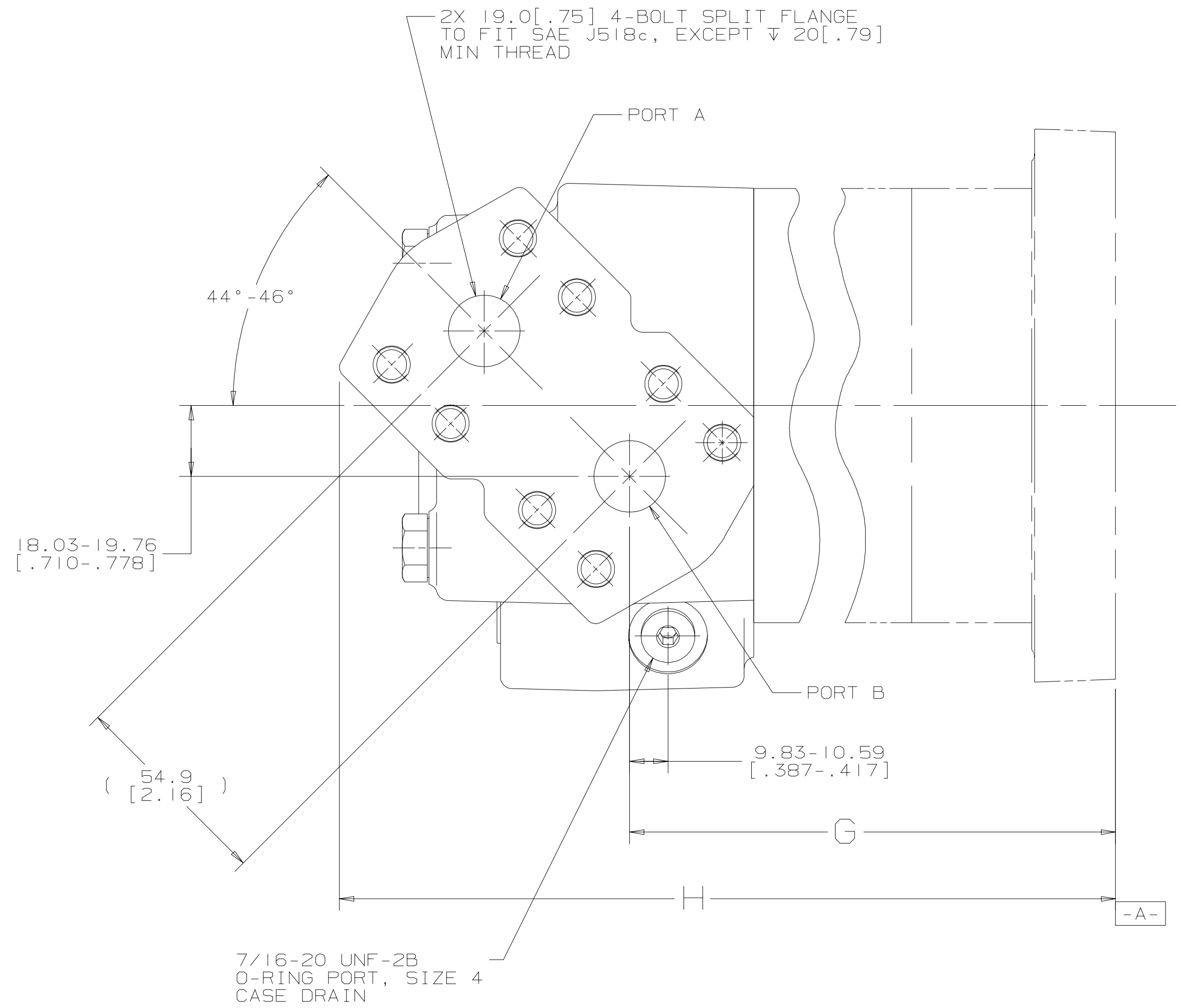
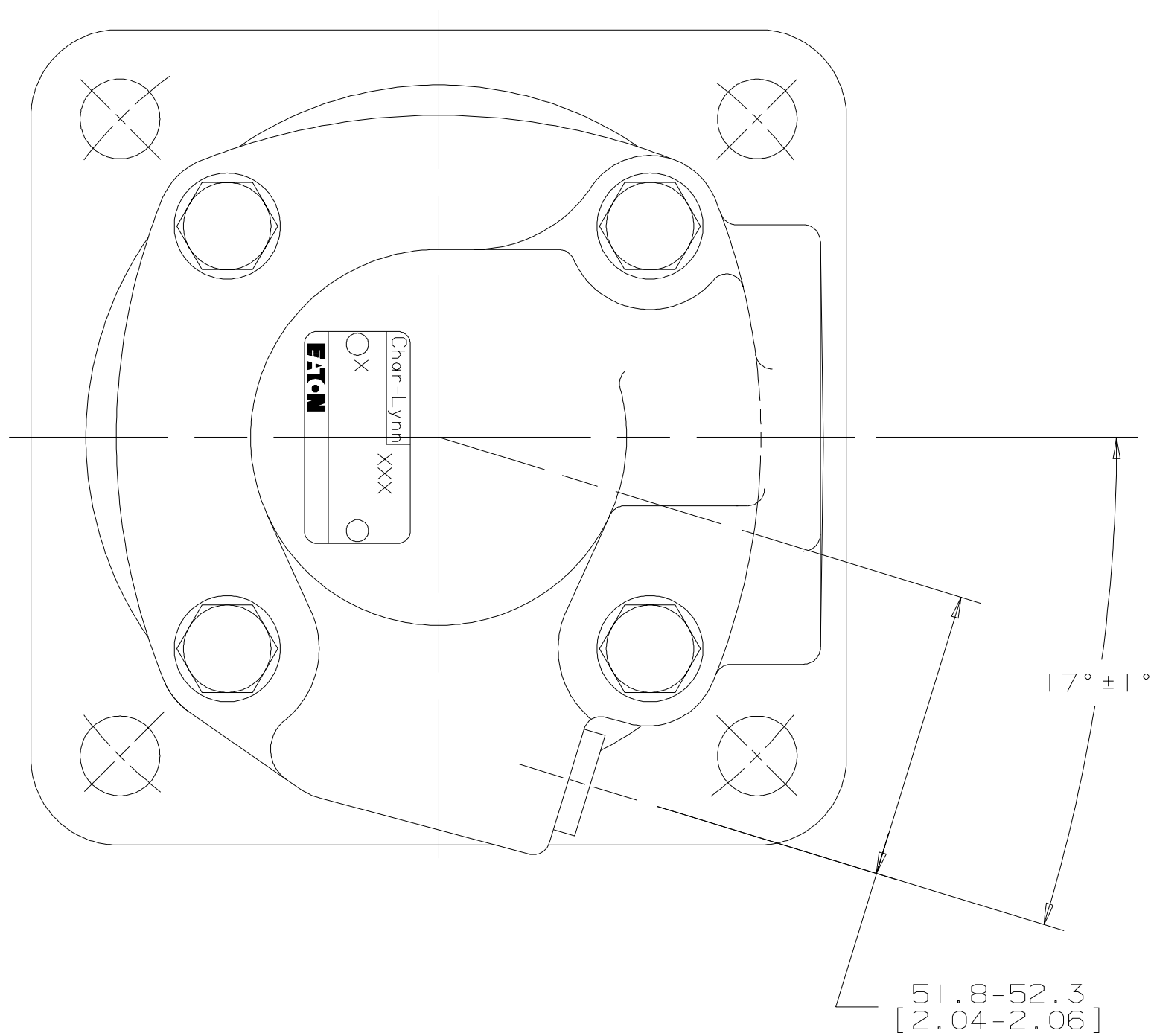


MOUNTING TYPE AA			MOUNTING TYPE AB OR AM			MOUNTING TYPE AC			MOUNTING TYPE AF		
DISP	G	H MAX	DISP	G	H MAX	DISP	G	H MAX	DISP	G	H MAX
067	98.0-100.8 [3.86-3.97]	178.8 [7.04]	067	165.1-168.4 [6.50-6.63]	246.3 [9.70]	067	94.5-97.3 [3.72-3.83]	175.3 [6.90]	067	169.2-172.7 [6.66-6.80]	250.7 [9.87]
080	102.1-104.9 [4.02-4.13]	182.8 [7.20]	080	169.2-172.5 [6.66-6.79]	250.4 [9.86]	080	98.6-101.3 [3.88-3.99]	179.3 [7.06]	080	173.2-176.8 [6.82-6.96]	254.8 [10.03]
099	108.5-111.3 [4.27-4.38]	189.2 [7.45]	099	175.5-178.8 [6.91-7.04]	256.8 [10.11]	099	104.9-107.7 [4.13-4.24]	185.7 [7.31]	099	179.6-183.1 [7.07-7.21]	260.8 [10.27]
125	117.1-119.6 [4.61-4.71]	197.6 [7.78]	125	184.2-187.5 [7.25-7.38]	265.2 [10.44]	125	113.3-116.3 [4.46-4.58]	194.3 [7.65]	125	188.2-191.5 [7.41-7.54]	269.5 [10.61]
150	108.5-111.3 [4.27-4.38]	189.2 [7.45]	150	175.5-178.8 [6.91-7.04]	256.8 [10.11]	150	104.9-107.7 [4.13-4.24]	185.7 [7.31]	150	179.6-183.1 [7.07-7.21]	260.8 [10.27]
171	113.0-115.6 [4.45-4.55]	193.5 [7.62]	171	179.8-183.1 [7.08-7.21]	261.1 [10.28]	171	109.2-112.0 [4.30-4.41]	190.0 [7.48]	171	184.2-187.5 [7.25-7.38]	265.4 [10.45]
190	117.1-119.6 [4.61-4.71]	197.6 [7.78]	190	184.2-187.5 [7.25-7.38]	265.2 [10.44]	190	113.3-116.3 [4.46-4.58]	194.3 [7.65]	190	188.2-191.5 [7.41-7.54]	269.5 [10.61]
240	127.8-130.3 [5.03-5.13]	208.3 [8.20]	240	194.8-198.1 [7.67-7.80]	275.9 [10.86]	240	124.0-127.0 [4.88-5.00]	205.0 [8.07]	240	198.9-202.2 [7.83-7.96]	280.1 [11.03]
301	140.5-143.3 [5.53-5.64]	221.2 [8.71]	301	207.5-210.8 [8.17-8.30]	288.8 [11.37]	301	136.9-140.0 [5.39-5.51]	217.7 [8.57]	301	211.6-215.1 [8.33-8.47]	293.1 [11.54]
381	157.5-160.3 [6.20-6.31]	238.3 [9.38]	381	224.5-228.1 [8.84-8.98]	305.8 [12.04]	381	153.9-157.0 [6.06-6.18]	235.0 [9.25]	381	228.6-232.2 [9.00-9.14]	310.1 [12.21]

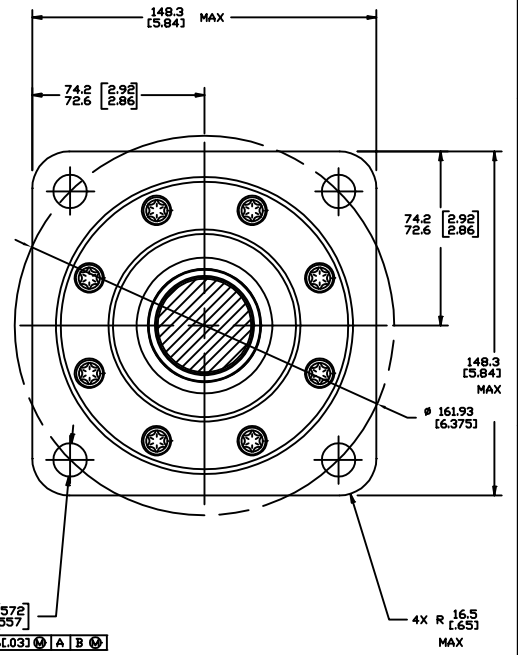
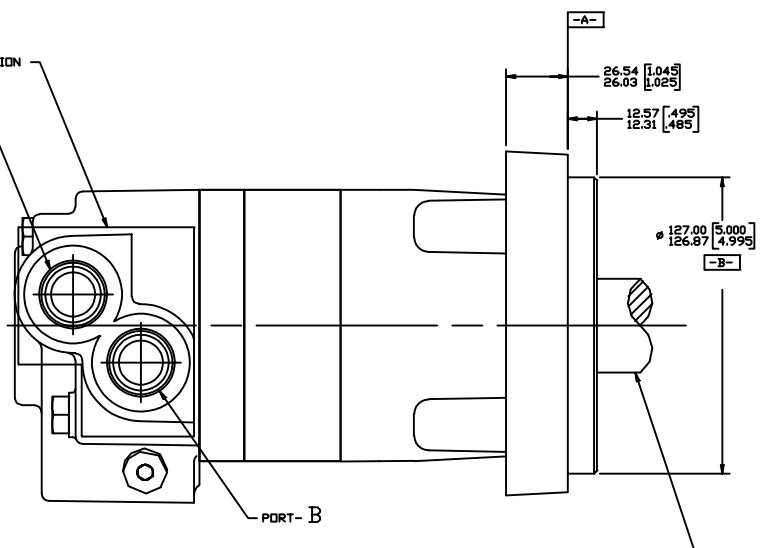
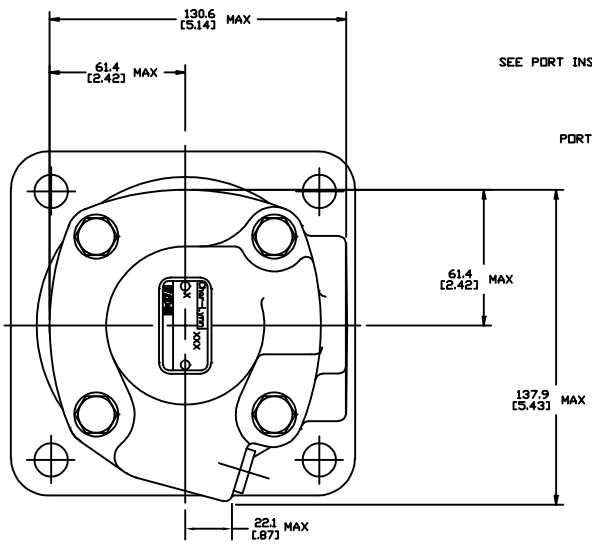
SYM	REVISION	BY	DATE	ECN
A	ENGINEERING RELEASE	LK	2-8-92	21551
B	ADDED LEFT HAND VIEW	AGJ	11-22-95	27499
C	(7D) ADDED MOUNTING TYPE M TO TAB	AGJ	1-19-04	M60756
D	REVISED TABULATION BLOCKS	AGJ	5-17-04	47918
E	REVISED TABULATION BLOCKS	VJP	7-12-05	52081
F	-1)(2B)PORT OPTION WAS "D" -2)ADDED CASE FLOW OPTION "02" -3)UPDATED DISP VALUES AND MOUNTING TYPE IN THE TABLE	AMM	1-24-07	0002527
G	(6B)DIM 18.03-19.76[.710-.778] WAS 18.77-19.02 [.739-.749]	SKS	10-28-10	M80476



- NOTES
- 1 PORTS - OPTION AD
  - 2 CASE FLOW - OPTION 02

UNLESS OTHERWISE SPECIFIED ALL DIMENSIONS ARE IN INCHES <input type="checkbox"/> MILLIMETERS <input checked="" type="checkbox"/>	DRAWING BASED ON ANSI Y14.5M-1982	
TOLERANCES .X ± .0005 .XX ± REF .XXX ± ONLY ∠ ---	NOTICE TO PERSONS RECEIVING THIS DRAWING AND / OR TECHNICAL INFORMATION THIS DOCUMENT, INCLUDING THE FORMING AND INFORMATION CONTAINED THEREON, IS CONFIDENTIAL AND IS THE PROPERTY OF EATON CORPORATION. IT IS TO BE USED ONLY FOR THE PURPOSES SPECIFIED HEREIN. NO PART OF THIS DOCUMENT IS TO BE REPRODUCED OR TRANSMITTED IN ANY FORM OR BY ANY MEANS, ELECTRONIC OR MECHANICAL, INCLUDING PHOTOCOPYING, RECORDING, OR BY ANY INFORMATION STORAGE AND RETRIEVAL SYSTEM, WITHOUT THE WRITTEN PERMISSION OF EATON CORPORATION. THIS NOTICE SHALL GOVERN THE STATUS OF THIS DOCUMENT. COPYRIGHT © 2008 EATON CORPORATION. ALL RIGHTS RESERVED.	<b>EATON</b> Eaton Corporation Hydraulic Division 15151 Highway 55 Eaton Profile, Inc. 55544
UNSPECIFIED RADI ARE --- UNSPECIFIED DRAFT ANGLES ARE ---	DRAWN BY/DATE LJK 5-16-92 CHECKED BY/DATE KJR 6-28-92 ENGINEER BY/DATE RVA 7-31-92 METALLURGY BY/DATE ---	MATERIAL/HEAT TREAT TITLE 4000 SERIES MOTOR PORT INSTALLATION
DRAWING FORMAT CADD <input checked="" type="checkbox"/> MANUAL <input type="checkbox"/>	THIRD ANGLE PROJECTION	MICROINCHES <input type="checkbox"/> NUMBER <input checked="" type="checkbox"/> A-556-004 SCALE 1/1 SHEET 1 OF 1

REV	DESCRIPTION	BY	CHK	DATE	ECN
A	ENGINEERING RELEASE	SDR		2-8-92	21551
J	REVISED	SSD		6-28-92	M79455



NOTE

1 ROTATION  
STANDARD) WHEN FACING SHAFT END OF MOTOR, SHAFT TO ROTATE,  
CLOCKWISE WHEN PORT "A" IS PRESSURIZED  
COUNTERCLOCKWISE WHEN PORT "B" IS PRESSURIZED

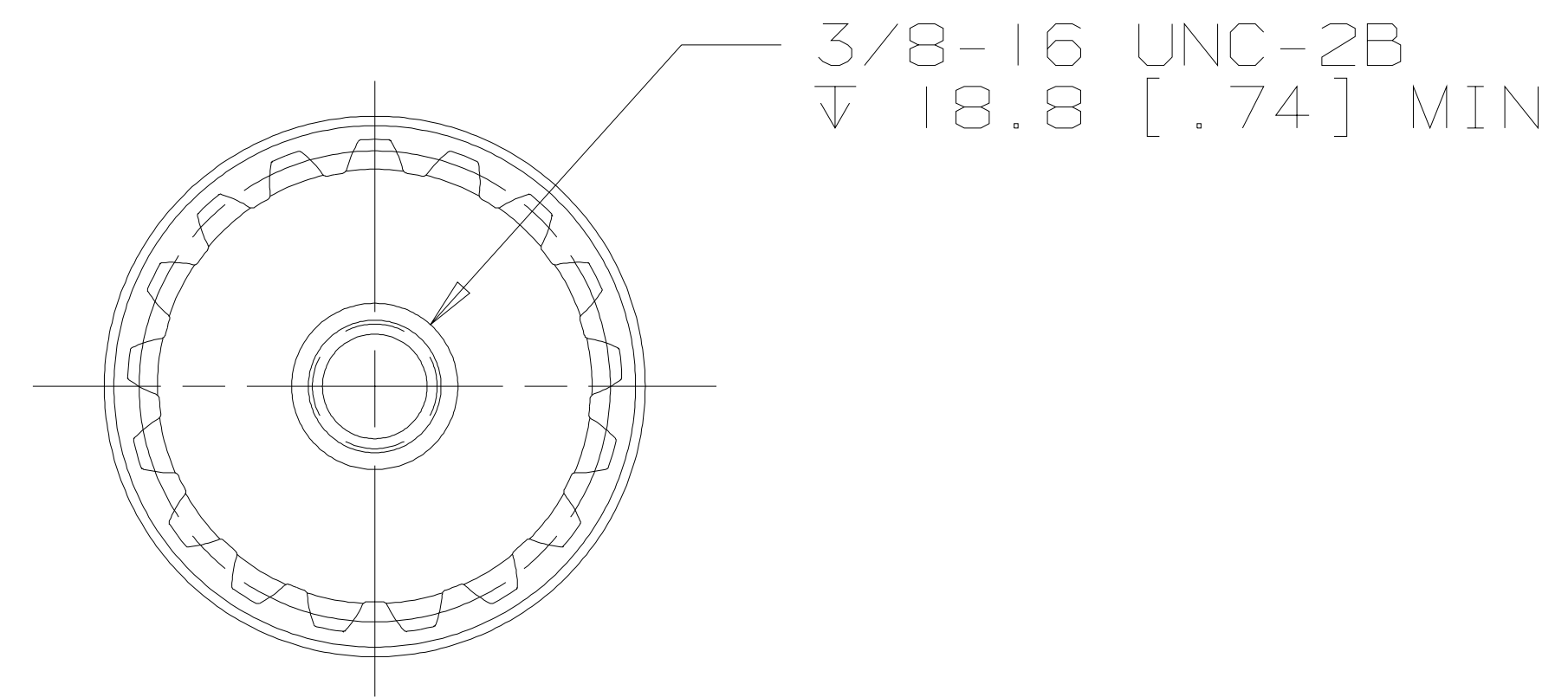
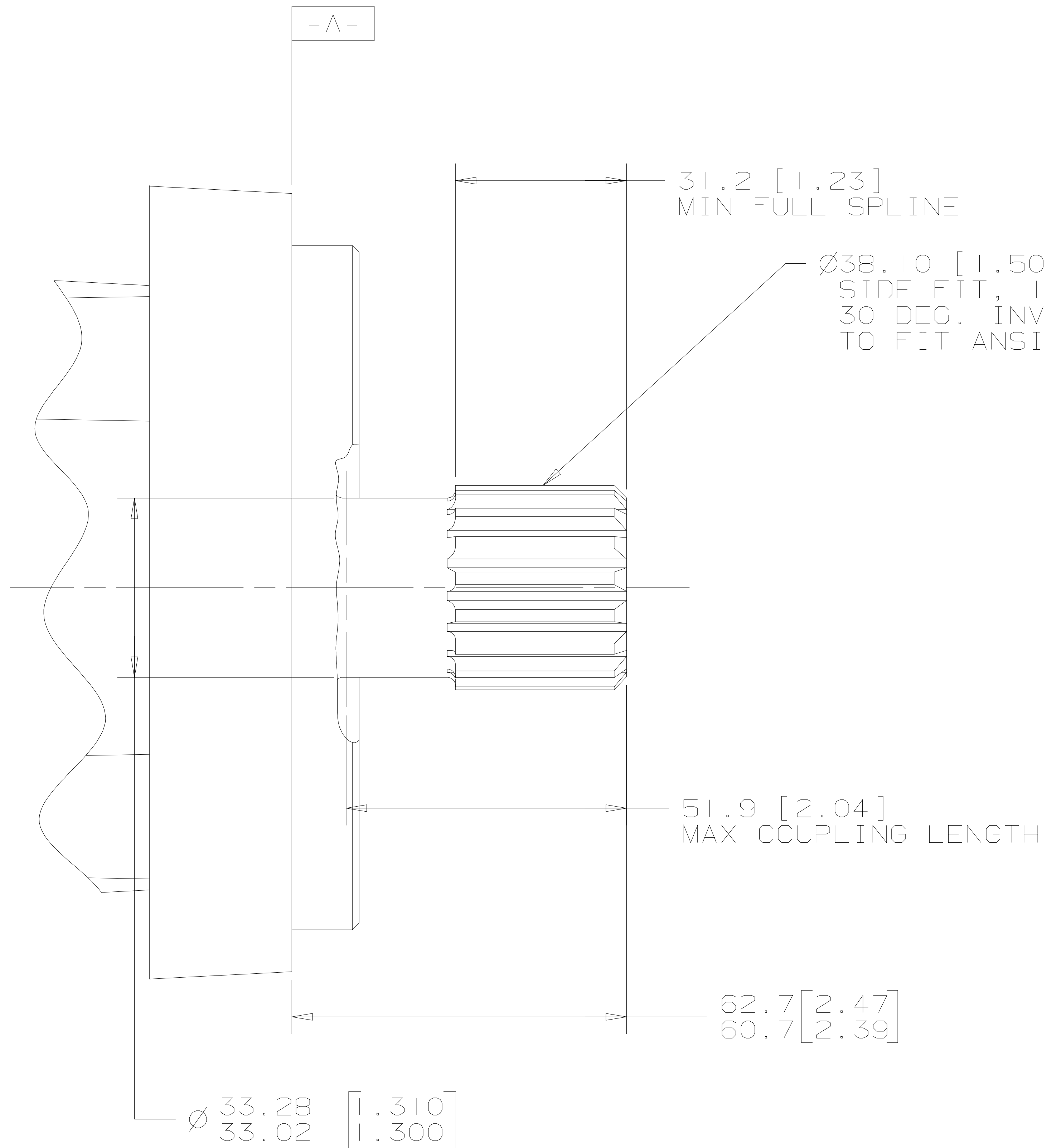
REVERSE) WHEN FACING SHAFT END OF MOTOR, SHAFT TO ROTATE,  
CLOCKWISE WHEN PORT "B" IS PRESSURIZED,  
COUNTERCLOCKWISE WHEN PORT "A" IS PRESSURIZED

2 MOUNTING TYPE: AF  
STANDARD, 4 BOLT, 127.00 [5.000] PILOT DIA.  
14.27 [0.562] DIA. HOLES ON 161.92 [6.375]  
DIA. BOLT CIRCLE. \*SAE C\*

REVIEWED FOR CLASSIFICATION PER ESP -042

UNLESS OTHERWISE SPECIFIED, ALL DIMENSIONS ARE IN INCHES	DRAWING BASED ON ANSI Y14.5M-1982	
BOXES <input type="checkbox"/>	DATE: 3-14-92	
TOLERANCES	TITLE: 4000 MOTOR INSTALLATION	
AS + REF	REVISED: SIR 3-14-92	NUMBER: A-602-000
FOR + ONLY	REVISED: KR 8-4-92	SCALE: 1/1
UNSPECIFIED HOLE DIA	REVISED: RA 8-4-92	SHEET: 1 OF 1
UNSPECIFIED SHAFT HOLE DIA	THIRD ANGLE PROJECTION	
B SIZE	DO NOT SCALE	

SYM	REVISION	BY	DATE	ECN
A	ENGINEERING RELEASE	SDR	2-8-92	21551
B	ADDED THREAD CALLOUT TO SHAFT END	RAF	4-16-96	28005
C	62.7/60.7 [2.47/2.39] WAS 62.5/61.5 [2.48/2.40]	AGJ	5-17-04	47918
C	-1) MOUNTING TYPE WAS "F" -2) OUTPUT SHAFT WAS "13"	SSD	1-24-07	0002527



NOTE

- 1 MOUNTING TYPE: OPTION AF
- 2 OUTPUT SHAFT: OPTION 10

UNLESS OTHERWISE SPECIFIED ALL DIMENSIONS ARE IN INCHES <input type="checkbox"/> MILLIMETERS [INCHES] <input checked="" type="checkbox"/>		DRAWING BASED ON ANSI Y14.5M-1982	
TOLERANCES .X ± ---- .XX ± REF .XXX ± ONLY < ----		NOTICE TO PERSONS RECEIVING THIS DRAWING AND / OR TECHNICAL INFORMATION Eaton Corporation claims proprietary rights in the information disclosed hereon. This document is issued in confidence and is not to be reproduced or used to manufacture anything shown hereon without the written permission of the Eaton Corporation.	
UNSPECIFIED RADII ARE		DRAWN BY/DATE SDR 4/9/92 MATERIAL/HEAT TREAT	
UNSPECIFIED DRAFT ANGLES ARE		CHECKED BY/DATE KJR 7-8-92	
DRAWING FORMAT CADD <input checked="" type="checkbox"/> MANUAL <input type="checkbox"/>		ENGRG BY/DATE RVA 7-31-92 TITLE 4000 SERIES MOTOR SHAFT INSTALLATION	
THIRD ANGLE PROJECTION DO NOT SCALE		METALLURGY BY/DATE	
ARITHMETICAL AVERAGE		NUMBER A-609-009	
SCALE 1/1		SHEET 1 OF 1	

