

**UNIT RATINGS**

**MAXIMUM INPUT SPEED:**  
NOT TO EXCEED 3600 RPM

**DISPLACEMENT:**  
0.0 TO 1.10 IN<sup>3</sup>/REV. (0.0 TO 18.0 CC/REV.)

**NORMAL CHARGE PUMP FLOW:**  
4.0 GPM (15 LPM) AT 50 PSI (3.45 BAR) AND 3600 RPM.

**MAXIMUM AUXILIARY OPERATING PRESSURE:**  
800 PSI (55.2 BAR)

**VOLUME OF OIL REQ'D TO FILL CASE:**  
20.3 FLUID OZ. (600 ML)

**UNIT DRY WEIGHT:**  
21 LBS. (9.5 KG)

**MAXIMUM OPERATING PRESSURE:**  
2250 PSI (155.2 BAR) PEAK  
1750 PSI (120.7 BAR) INTERMITTENT  
1250 PSI (86.2 BAR) CONTINUOUS

**OPERATING CONDITIONS**

**FILTRATION:**  
A 10 MICRON (NOMINAL) RATED FILTER IS REQ'D. FOR FILTRATION OF FLUID SUPPLIED TO THE RETURN FITTING. FILTER CARTRIDGE MUST BE CAPABLE OF WITHSTANDING 150 PSI (10.3 BAR) INTERNAL PRESSURE.

**CASE PRESSURE:**  
CASE PRESSURE SHOULD NOT EXCEED 12 PSI (0.8 BAR) INTERMITTENT, 7 PSI (0.5 BAR) CONTINUOUS.

**FLUIDS:**  
REFER TO DATA SHEET EH-2043 FOR RECOMMENDED OIL SPECIFICATION.

**INSTALLATION:**  
INSTALLATION TORQUE OF MOUNTING BOLTS TO BE 18-22 FT-LB/25-30 N·M

**CHARGE PUMP INLET PRESSURE:**

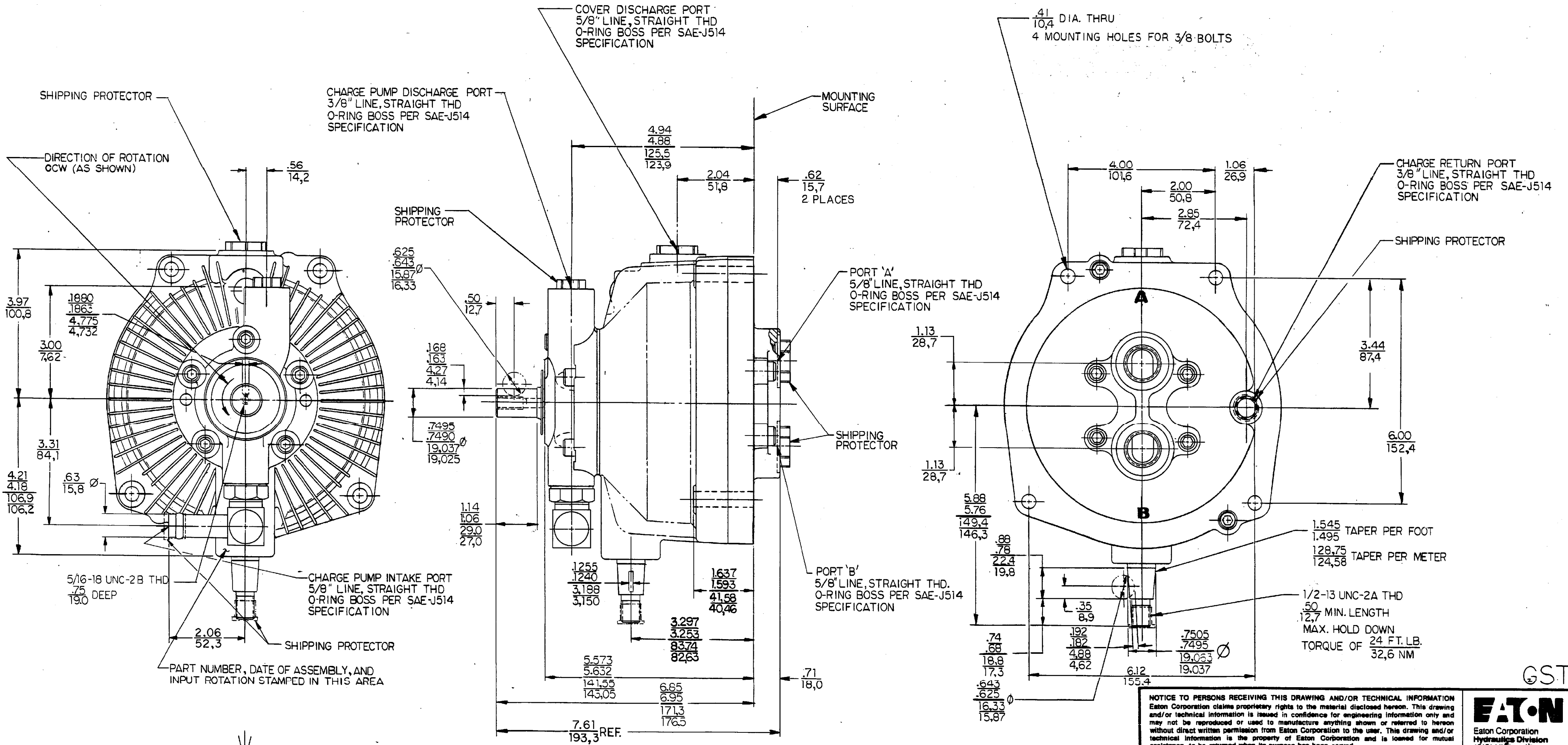
MAXIMUM CONTINUOUS INLET VACUUM AT PUMP INTAKE UNDER NORMAL OPERATING CONDITIONS IS 9.8 PSIA (10 INCHES/254 MM HG AT SEA LEVEL.)

**MINIMUM OIL VISCOSITY:**  
60 SUS-OIL TEMPERATURE NOT TO EXCEED 200°F (-20°F MIN) / 93°C (-29°C MIN)

**UNIT EQUIPPED WITH ACCELERATION VALVES**

FOR ANY DEVIATION FROM THESE SPECIFICATIONS, CONSULT EATON ENGINEERING.

SYM	REVISION	BY	DATE	ECN
A	RELEASE FOR SAMPLES AND ESTIMATE	SB G	3-20-84	X-2405
B	(1)REVISED & REDRAWN (2)ENGINEERING RELEASE (XET-14020-259)	KLR	12-97	13930



MAX. RECOMMENDED CONTROL ANGLE 14° FOR FLOW FROM PORT 'B' STOPS MUST BE PROVIDED BY CUSTOMER ON LINKAGE

MAX. RECOMMENDED CONTROL ANGLE 14° FOR FLOW FROM PORT 'A' STOPS MUST BE PROVIDED BY CUSTOMER ON LINKAGE

UNLESS OTHERWISE SPECIFIED: ALL DIMENSIONS ARE NOMINAL.  
L LINEAR MEASUREMENT: IN./MM; IN./MM

**NOTICE TO PERSONS RECEIVING THIS DRAWING AND/OR TECHNICAL INFORMATION**  
Eaton Corporation claims proprietary rights to the material disclosed herein. This drawing and/or technical information is issued in confidence for engineering information only and may not be reproduced or used to manufacture anything shown or referred to herein without direct written permission from Eaton Corporation to the user. This drawing and/or technical information is the property of Eaton Corporation and is loaned for mutual assistance, to be returned when its purpose has been served. THIS DRAWING AND/OR TECHNICAL INFORMATION IS THE PROPERTY OF EATON CORP.

**EATON**  
Eaton Corporation  
Hydraulic Division  
15151 Highway 5  
Eden Prairie, MN 55344

<b>DRAWN BY/DATE</b> KLR 1-27-87	<b>MATERIAL/HEAT TREAT</b>
<b>CHECKED BY/DATE</b> JED 2-6-87	CCW
<b>ENGRG BY/DATE</b> SGA 2-12-87	<b>TITLE</b>
<b>DO NOT SCALE</b>	11 VARIABLE PUMP INSTALLATION
<b>THIRD ANGLE PROJECTION</b>	<b>NUMBER</b>
	001120-011
	<b>SCALE FULL SIZE SHEET 1 OF 1</b>