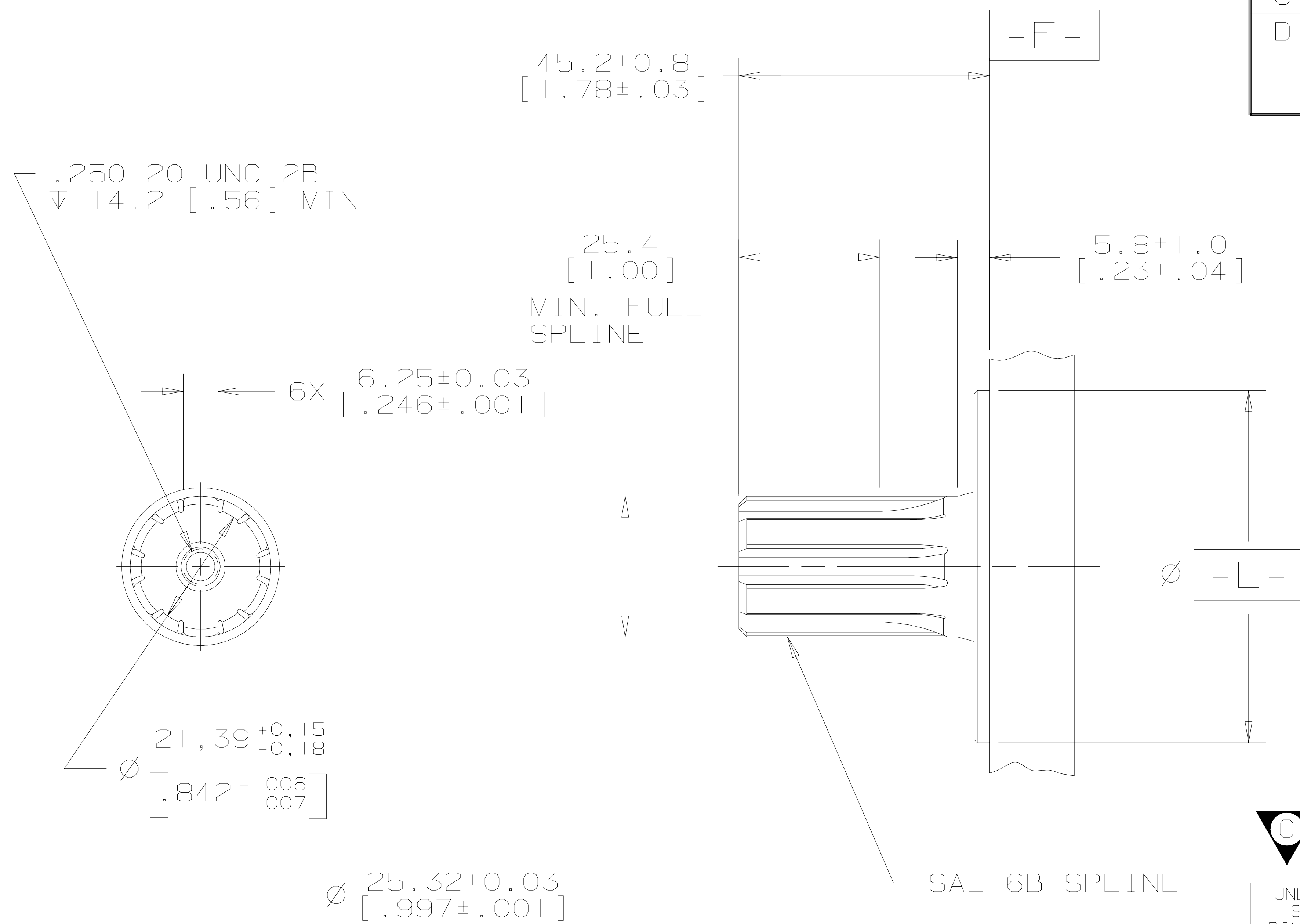


REV	DESCRIPTION	BY	CHK	DATE	ECN
A	ENGINEERING RELEASE	RLL		11-10-87	14736
B	PICTORIAL CHANGE	DGS		7-11-89	17550
C	PICTORIAL CHANGE	MLL		3-19-02	38026
D	UPDATED TO CURRENT FORMAT	CSGSSD		03/04/10	M78543



◎	∅ 0.26 [ .010 ]	E
⊥	0.08 [ .003 ]	F

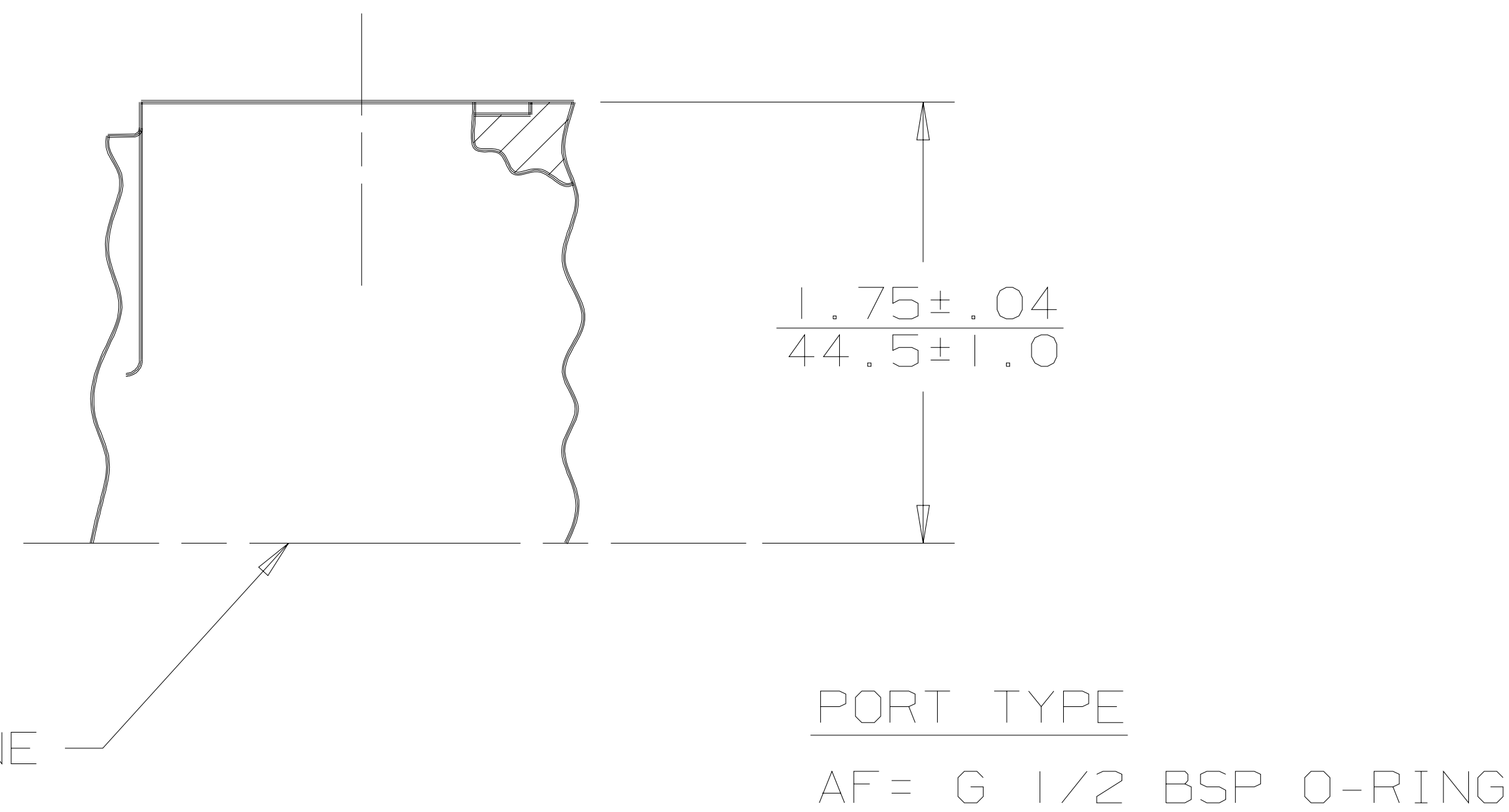
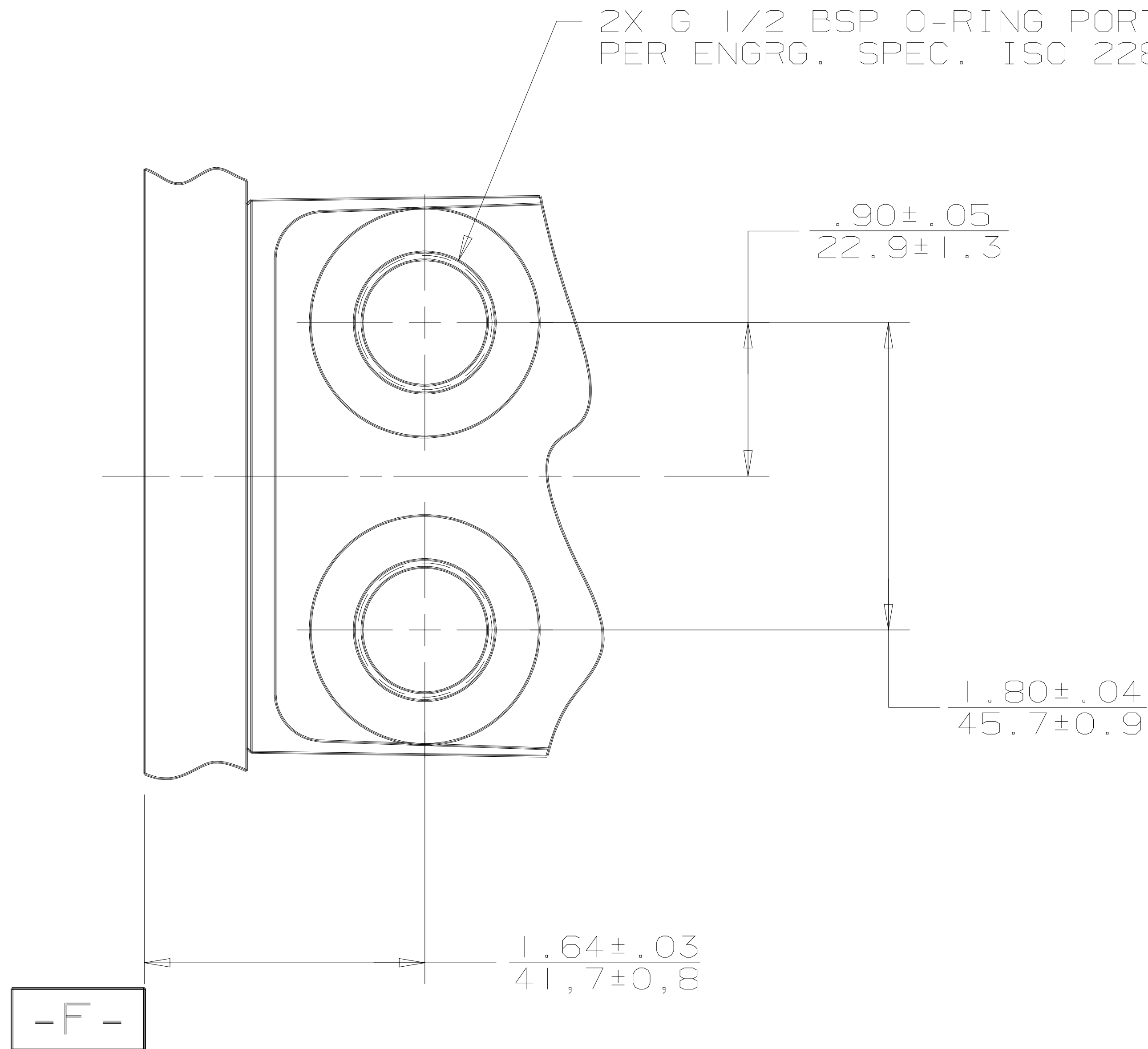
OUTPUT SHAFT  
 02 = ∅ 25.4 [ 1.00 ] SAE 6B SPLINE  
 WITH 1/4-20 UNC-2B THREADED HOLE

REVIEWED FOR CLASSIFICATION PER ESP-042

UNLESS OTHERWISE SPECIFIED ALL DIMENSIONS ARE IN INCHES <input type="checkbox"/> MILLIMETERS [INCHES] <input checked="" type="checkbox"/>	DRAWING BASED ON ANSI Y14.5M-1982	
	EATON CORPORATION - CONFIDENTIAL AND PROPRIETARY NOTICE TO PERSONS RECEIVING THIS DRAWING AND / OR TECHNICAL INFORMATION <small>THIS DOCUMENT, INCLUDING THE DRAWING AND INFORMATION CONTAINED THEREON, IS CONFIDENTIAL AND IS THE EXCLUSIVE PROPERTY OF EATON CORPORATION, AND IS MERELY ON LOAN AND SUBJECT TO RECALL BY EATON AT ANY TIME. BY TAKING POSSESSION OF THIS DOCUMENT, THE RECIPIENT ACKNOWLEDGES AND AGREES THAT THIS DOCUMENT CANNOT BE USED IN ANY MANNER ADVERSE TO THE INTERESTS OF EATON, AND THAT NO PORTION OF THIS DOCUMENT MAY BE COPIED OR OTHERWISE REPRODUCED WITHOUT THE PRIOR WRITTEN CONSENT OF EATON. IN THE CASE OF CONFLICTING CONTRACTUAL PROVISIONS, THIS NOTICE SHALL GOVERN THE STATUS OF THIS DOCUMENT. COPYRIGHT 2008 EATON CORPORATION - ALL RIGHTS RESERVED.</small>	
TOLERANCES .X ± ---- .XX ± REF .XXX ± ONLY ∠ ± ----°	DRAWN RLL BY/DATE 11-3-87	MATERIAL/HEAT TREAT
	CHECKED BY/DATE	
UNSPECIFIED RADII ARE: -----	ENGRG BY/DATE	TITLE SHAFT INSTALLATION
UNSPECIFIED DRAFT ANGLES ARE: -----°	METALLURGY ----- BY/DATE -----	
B SIZE	THIRD ANGLE PROJECTION DO NOT SCALE	NUMBER A-109-002
	ARITHMETICAL AVERAGE	SCALE 1/1 SHEET 1 OF 1



SYM	REVISION	BY	DATE	ECN
A	ENGINEERING RELEASE	DK	11-10-87	14736
B	PORT TYPE OPTION WAS "E"	SSD	03-27-07	0004356
C	REVISED	SSD	07-31-08	M6531



UNLESS OTHERWISE SPECIFIED ALL DIMENSIONS ARE IN INCHES <input type="checkbox"/> MILLIMETERS [INCHES] <input checked="" type="checkbox"/>	DRAWING BASED ON ANSI Y14.5M-1982	
	EATON CORPORATION - CONFIDENTIAL AND PROPRIETARY NOTICE TO PERSONS RECEIVING THIS DRAWING AND / OR TECHNICAL INFORMATION	
TOLERANCES .X ± -- .XX ± -- .XXX ± -- ∅ ± --°	DRAWN DK BY/DATE 11-18-87	MATERIAL/HEAT TREAT -
	CHECKED - BY/DATE -	-
UNSPECIFIED RADII ARE: -----	ENGRG - BY/DATE -	TITLE PORT INSTALLATION
UNSPECIFIED DRAFT ANGLES ARE: -----°	METALLURGY ----- BY/DATE -----	NUMBER A-110-005
B SIZE	THIRD ANGLE PROJECTION DO NOT SCALE	SCALE 1/1 SHEET 1 OF 1



THIS DOCUMENT, INCLUDING THE DRAWING AND INFORMATION CONTAINED THEREON, IS CONFIDENTIAL AND IS THE EXCLUSIVE PROPERTY OF EATON CORPORATION, AND IS MERELY ON LOAN AND SUBJECT TO RECALL BY EATON AT ANY TIME. BY TAKING POSSESSION OF THIS DOCUMENT, THE RECIPIENT ACKNOWLEDGES AND AGREES THAT THIS DOCUMENT CANNOT BE USED IN ANY MANNER ADVERSE TO THE INTERESTS OF EATON, AND THAT NO PORTION OF THIS DOCUMENT MAY BE COPIED OR OTHERWISE REPRODUCED WITHOUT THE PRIOR WRITTEN CONSENT OF EATON. IN THE CASE OF CONFLICTING CONTRACTUAL PROVISIONS, THIS NOTICE SHALL GOVERN THE STATUS OF THIS DOCUMENT.  
COPYRIGHT 2008 EATON CORPORATION - ALL RIGHTS RESERVED.

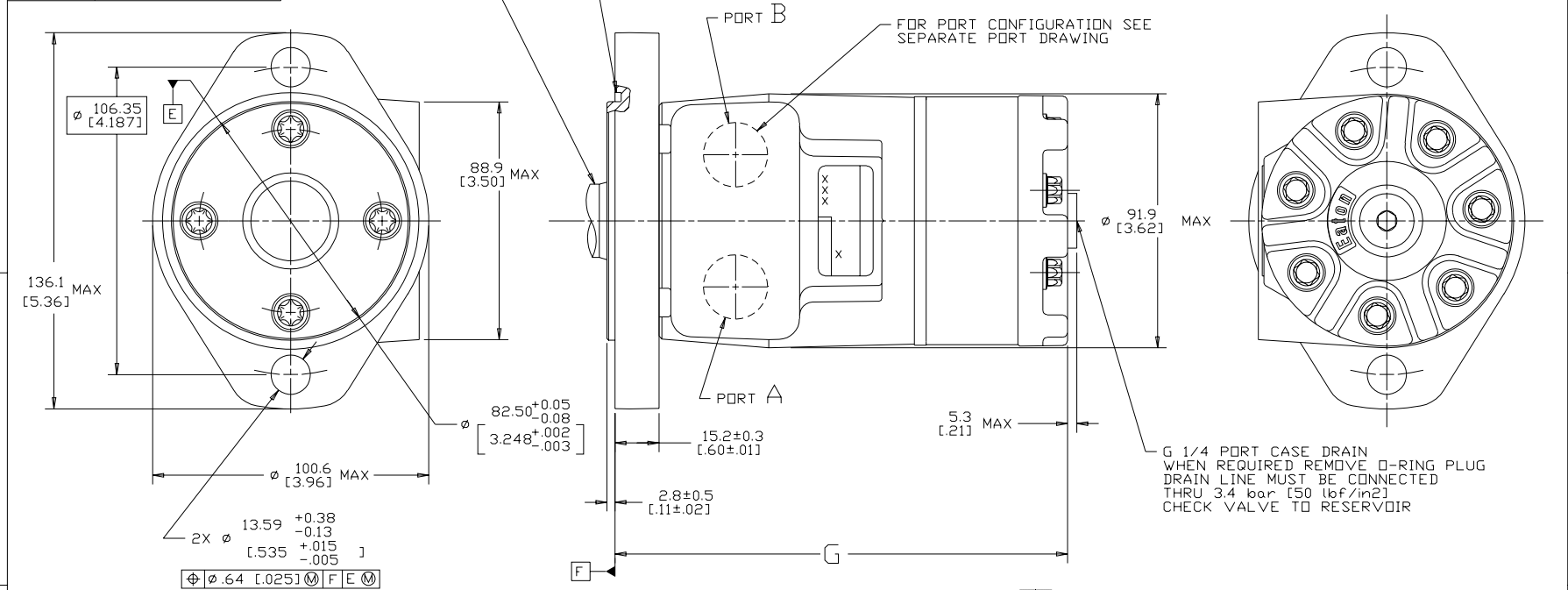
DISPL CODE	G MAX
018	132.2 [5.21]
022	132.2 [5.21]
025	133.1 [5.24]
030	134.6 [5.30]
036	136.4 [5.37]
040	137.6 [5.42]
049	140.2 [5.52]
062	144.2 [5.68]
080	149.6 [5.89]
096	154.4 [6.08]
119	161.2 [6.35]
149	170.2 [6.70]
187	181.6 [7.15]
226	193.3 [7.61]
298	215.0 [8.46]

FOR SHAFT CONFIGURATION SEE SEPARATE SHAFT DRAWING

GROOVE PROVIDED FOR 82.6 [3.25] I.D. X 2.62 [0.103] CROSS SECTION O-RING (DASH NO. 152)

FOR PORT CONFIGURATION SEE SEPARATE PORT DRAWING

REV	DESCRIPTION	BY	DATE	ECN
A	ENGINEERING RELEASE	RAF	2-8-94	M11208
B	(2B) DIM 5.3 [0.21] MAX WAS 3.8 [0.15] MAX	JMM	10-18-94	25844
C	-1>(3C) 88.9 [3.50] MAX WAS 84.6 [3.33] MAX -2>(2C) Ø 91.9 [3.62] MAX WAS Ø 87.9 [3.46] MAX	JMM	10-26-94	26147
D	<4B>Ø13.59+0.38/-0.13 [0.535+0.015/-0.005] WAS Ø13.59+0.13 [0.535+0.005]	AGJ	1-28-02	39853
E	-1>(4B) WAS 131.4 [5.17] MAX. -2>(4B) WAS 96.8 [3.81] MAX.	AAK	04-07-04	46856
F	<4D> ADDED DISPL CODE "A3"	RG	6-7-06	54819
G	-1>(4D) UPDATED TABLE FOR DISPL CODE -2>(4A) NOTE 2 MOUNTING FLANGE WAS "A"	PM	03-27-07	0004355
H	-1>REVISED AS PER STACK-UP -2>REVISED PICTORIALLY -3>UPDATED TO ASME Y14.5-2009 STANDARD	NRI	03-20-14	M92343
J	<4A> NOTE 3 WAS CASE DRAIN :2..	SSP	12-26-15	0068068_1



G 1/4 PORT CASE DRAIN WHEN REQUIRED REMOVE O-RING PLUG DRAIN LINE MUST BE CONNECTED THRU 3.4 bar [50 lbf/in<sup>2</sup>] CHECK VALVE TO RESERVOIR

- NOTE
- ROTATION STANDARD WHEN FACING SHAFT END OF MOTOR SHAFT TO ROTATE CLOCKWISE WHEN PORT "A" IS PRESSURIZED COUNTERCLOCKWISE WHEN PORT "B" IS PRESSURIZED REVERSE WHEN FACING SHAFT END OF MOTOR, SHAFT TO ROTATE CLOCKWISE WHEN PORT "B" IS PRESSURIZED COUNTERCLOCKWISE WHEN PORT "A" IS PRESSURIZED
  - MOUNTING FLANGE AA = STANDARD, 2 BOLT: Ø 82.6 [3.25] X 3.0 [0.12] PILOT Ø 13.59 [0.535] HOLES ON Ø 106.2 [4.18] BOLT CIRCLE
  - CASE DRAIN 02 = G 1/4 PORT (END CAP)

REVIEWED FOR CLASSIFICATION PER ESP -042

UNLESS OTHERWISE SPECIFIED ALL DIMENSIONS ARE IN INCHES [MILLIMETERS (INCHES)]		DRAWING BASED ON ANSI Y14.5-2009	
TOLERANCES		EATON CORPORATION - CONFIDENTIAL AND PROPRIETARY NOTICE TO PERSONS RECEIVING THIS DRAWING AND / OR TECHNICAL INFORMATION	
±	----	THIS DOCUMENT INCLUDING THE REVISED INFORMATION CONTAINED HEREIN IS CONFIDENTIAL AND IS THE PROPERTY OF EATON CORPORATION AND IS NOT TO BE DISCLOSED TO ANY OTHER PARTY WITHOUT THE WRITTEN PERMISSION OF EATON CORPORATION. NOTICE AND NOTICE OF CONFIDENTIALITY ARE HEREBY GIVEN TO ALL PERSONS RECEIVING THIS DOCUMENT.	
xx ±	----	Eaton Hydraulics LLC 14615 Lone Oak Road Eden Prairie, MN 55344 USA	
xxx ±	----	DRAWN BY/DATE RAF 2/4/94 MATERIAL/HEAT TREAT	
∠	----	CHECKED BY/DATE SDR 2/23/94	
UNSPECIFIED RADI ARE	----	ENGRG BY/DATE RVA 3/3/94	
UNSPECIFIED DRAFT ANGLES ARE	----	METALLURGY BY/DATE	
D SIZE	DO NOT SCALE	THIRD ANGLE PROJECTION	
		ARITHMETICAL AVERAGE	
		TITLE T MOTOR INSTALLATION	
		NUMBER A-821-007	
		SCALE 1/1 SHEET 1 OF 1	